
Parallels Software International, Inc.

Parallels Workstation

Quick Start Guide



(c) 2005-2006

Contents

Preface	3
Creating Virtual Machine	4
Activating Parallels Workstation	8
Installing Windows XP	10
Installing Parallels Tools	17
What to Do Next	20

CHAPTER 1

Preface

Congratulations on your installation of Parallels Workstation!

This small guide will show you how to create your first Windows XP virtual machine, step-by-step. We chose Windows XP as one of the most popular operating systems.

Let's start.

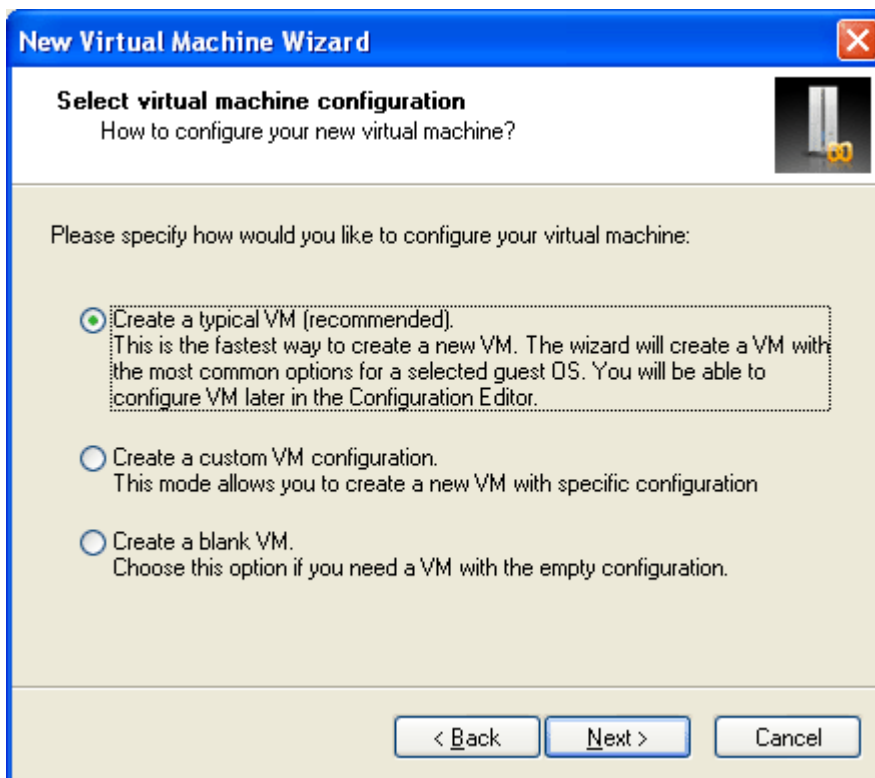
CHAPTER 2

Creating Virtual Machine

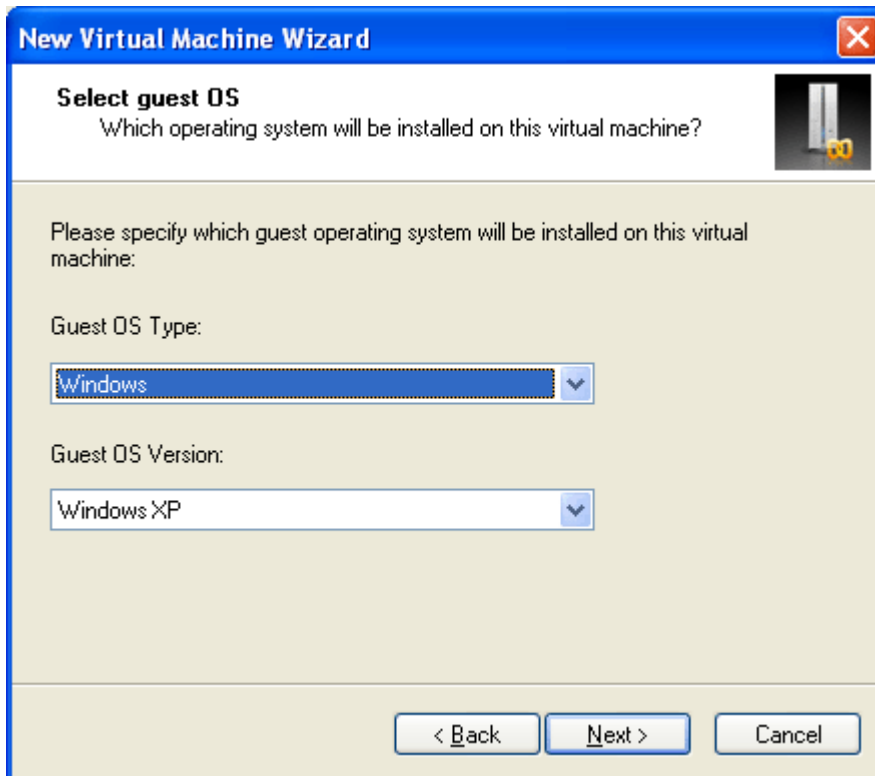
This is the first time you start Parallels Workstation (right?), here is what you see on the screen:



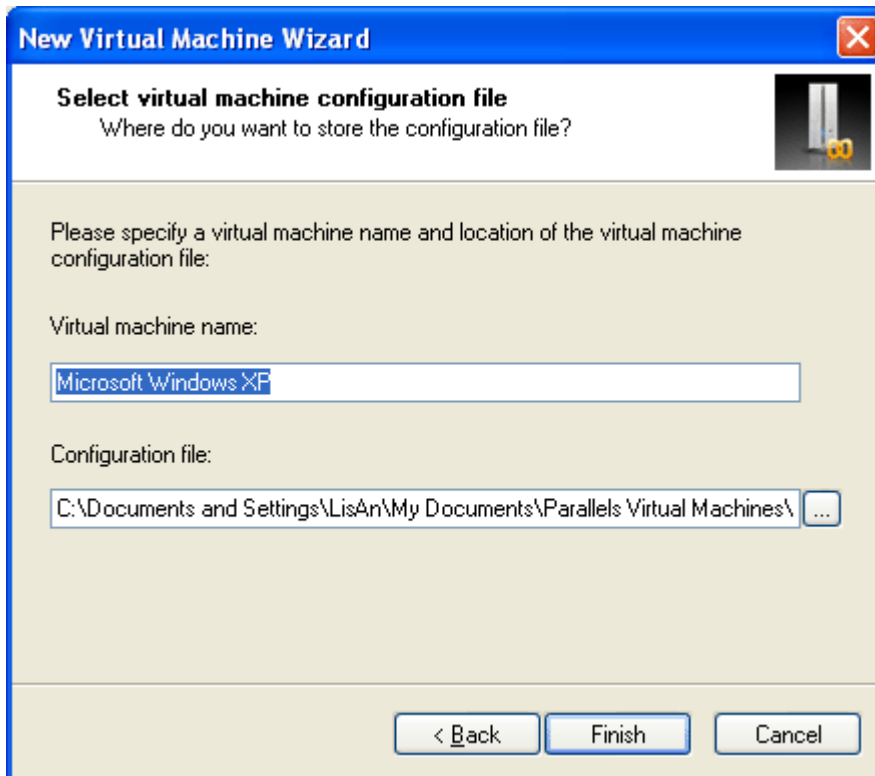
As long as there is no virtual machine to open, a tool for building them is automatically opened. It's called New Virtual Machine Wizard. Click the Next button.



On the next screen notice that the first option, Create a typical VM, is selected. (Keep in mind that "VM" means "virtual machine".) We highly recommend that you leave this selection untouched, especially if you are new to virtualization; it's the easiest way to create a new virtual machine. Click Next.

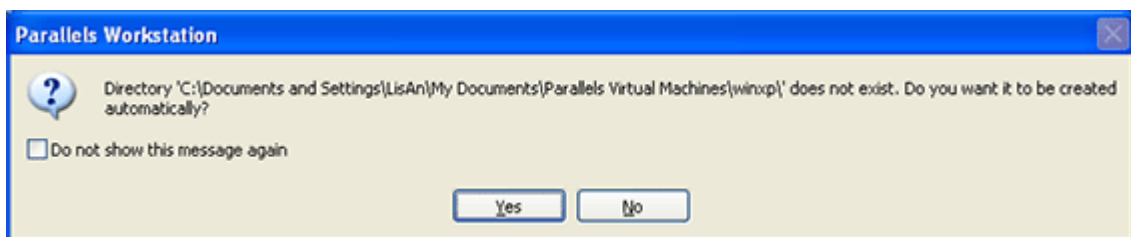


On the next screen, you specify what guest operating system you are going to install on your virtual machine. In fact, you will see that the right operating system is already selected by default: Windows family from the first pop-up menu and the version in the second one (Windows XP). After this click Next.



In this final step, you're asked to name your virtual machine. The name doesn't really matter unless you plan to create several VMs running the same operating system; in that case, you'll want to give them distinct names ("Windows XP for Games" and "Windows XP for Work", for example). Unless you indicate otherwise, the wizard will name the VM after the guest OS you've specified.

This dialog box also lets you specify where you want to store the files that make up your virtual machine. By default, Parallels Workstation puts the virtual machine into your personal folder. Click Finish to create the virtual machine.

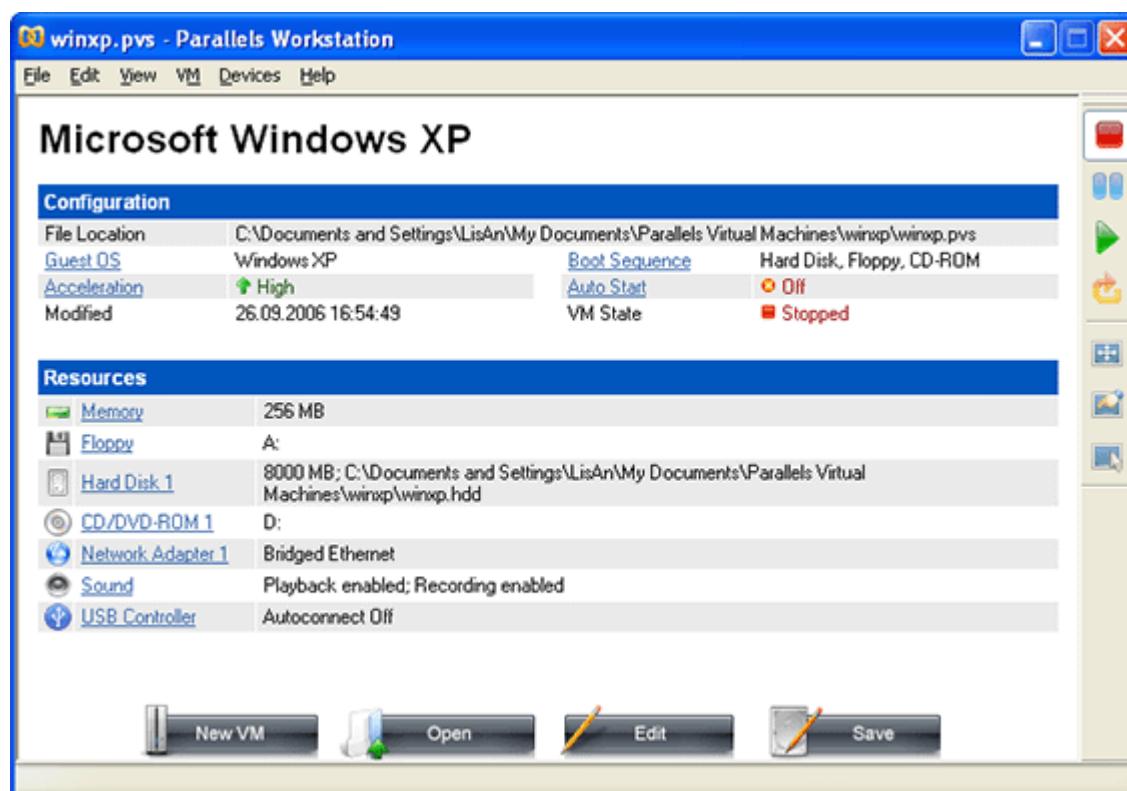


Click Yes to let Parallels Workstation create a folder for the virtual machine automatically.

CHAPTER 3

Activating Parallels Workstation

Now, the virtual machine is "built". Here is what you see on the screen.

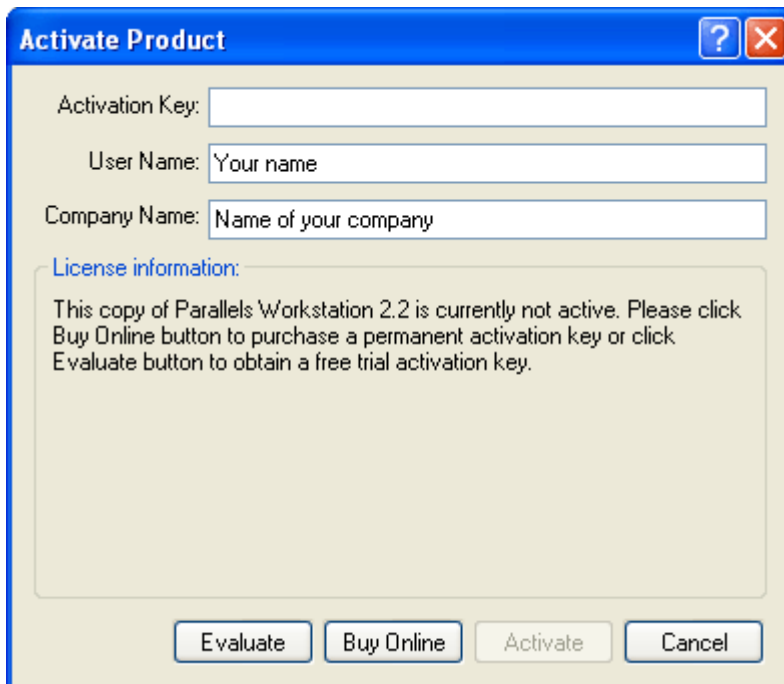


Don't be mistaken: it's only virtual machine's hardware. You have to install Windows XP operating system to run this virtual machine. And before installing Windows XP we are going to activate your copy of Parallels Workstation.

To activate Parallels Workstation, follow these easy steps:

- 1 Click **Help** in the Parallels Workstation menu and select **Activate Product**.
- 2 In the **Activate Product** window, fill in the following fields:
 - In the **Activation Key** field type the key provided for you. When you fill in this field, the **Activate** button becomes enabled.

- Specify your name and name of your company in the User Name and Company Name fields. Both of these fields are optional.




In Linux primary OS the **Activate Product** dialog looks slightly different.

After entering your activation key, click the **Activate** button. If you have entered a valid activation key, the following confirmation message will be displayed: "Parallels Workstation has been activated successfully. Thank you!" Now that your copy of Parallels Workstation is active, you can build, configure, and run virtual machines, congratulations!

CHAPTER 4

Installing Windows XP

Now we are ready to install the Windows XP guest operating system:

- Insert the installation CD or DVD with Windows XP into the CD/DVD-ROM drive of your computer.
- Click the Power On  button to start the virtual machine. Installation starts, and the Welcome to Setup screen is shown soon.



Now you've got two computers running at once: your actual PC, and the simulated computer that's running inside it. But you've got only one mouse and keyboard! How, then, is Parallels Workstation supposed to know when a certain mouse or keyboard activity is intended for your primary OS, and when for the guest OS? To start communicating with virtual machine, you have to capture your mouse and keyboard inside the virtual machine: click somewhere inside the Windows XP screen.

Note. You can return to your primary OS at any time by pressing **Ctrl+Alt** on your keyboard.

After this press **Enter** on your keyboard.

- The license agreement is displayed on the screen. To scroll down press the Pagedown key. To agree press F8.

```

Windows XP Licensing Agreement
-----
Microsoft Windows XP Professional
END-USER LICENSE AGREEMENT

IMPORTANT-READ CAREFULLY: This End-User
License Agreement ("EULA") is a legal agreement between you
(either an individual or a single entity) and Microsoft
Corporation for the Microsoft software product identified above,
which includes computer software and may include associated
media, printed materials, "online" or electronic documentation,
and Internet-based services ("Product"). An amendment or
addendum to this EULA may accompany the Product. YOU AGREE TO BE
BOUND BY THE TERMS OF THIS EULA BY
INSTALLING, COPYING, OR OTHERWISE USING THE
PRODUCT. IF YOU DO NOT AGREE, DO NOT INSTALL
OR USE THE PRODUCT; YOU MAY RETURN IT TO YOUR
PLACE OF PURCHASE FOR A FULL REFUND.

1. GRANT OF LICENSE. Microsoft grants you the following rights
provided that you comply with all terms and conditions of
this EULA:

* Installation and use. You may install, use, access,
display and run one copy of the Product on a single
computer, such as a workstation, terminal or other device
("Workstation Computer"). The Product may not be used
by more than two (2) processors at any one time on any

F8=I agree ESC=I do not agree PAGE DOWN=Next Page

```

- In the lower part of the following screen, the Setup displays the list of hard disks and partitions available in the virtual machine. You should have the only one item, the unpartitioned space. Press Enter to set up Windows XP on this object.

```

Windows XP Professional Setup
-----
The following list shows the existing partitions and
unpartitioned space on this computer.

Use the UP and DOWN ARROW keys to select an item in the list.

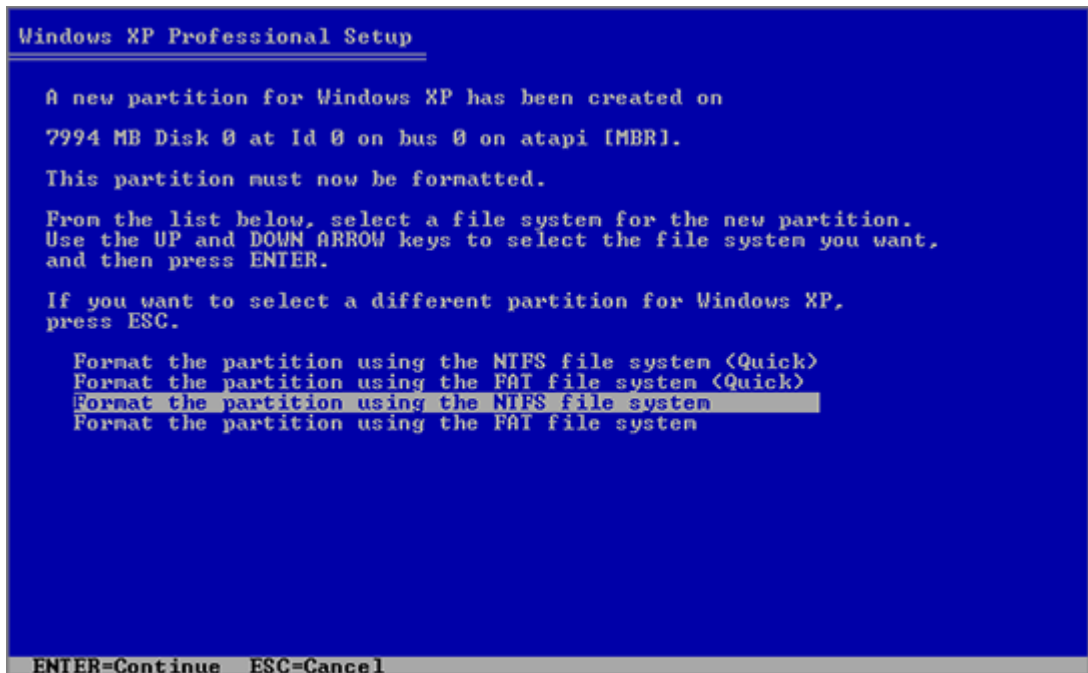
• To set up Windows XP on the selected item, press ENTER.
• To create a partition in the unpartitioned space, press C.
• To delete the selected partition, press D.

7994 MB Disk 0 at Id 0 on bus 0 on atapi [MBR]
-----
Unpartitioned space          7993 MB
-----

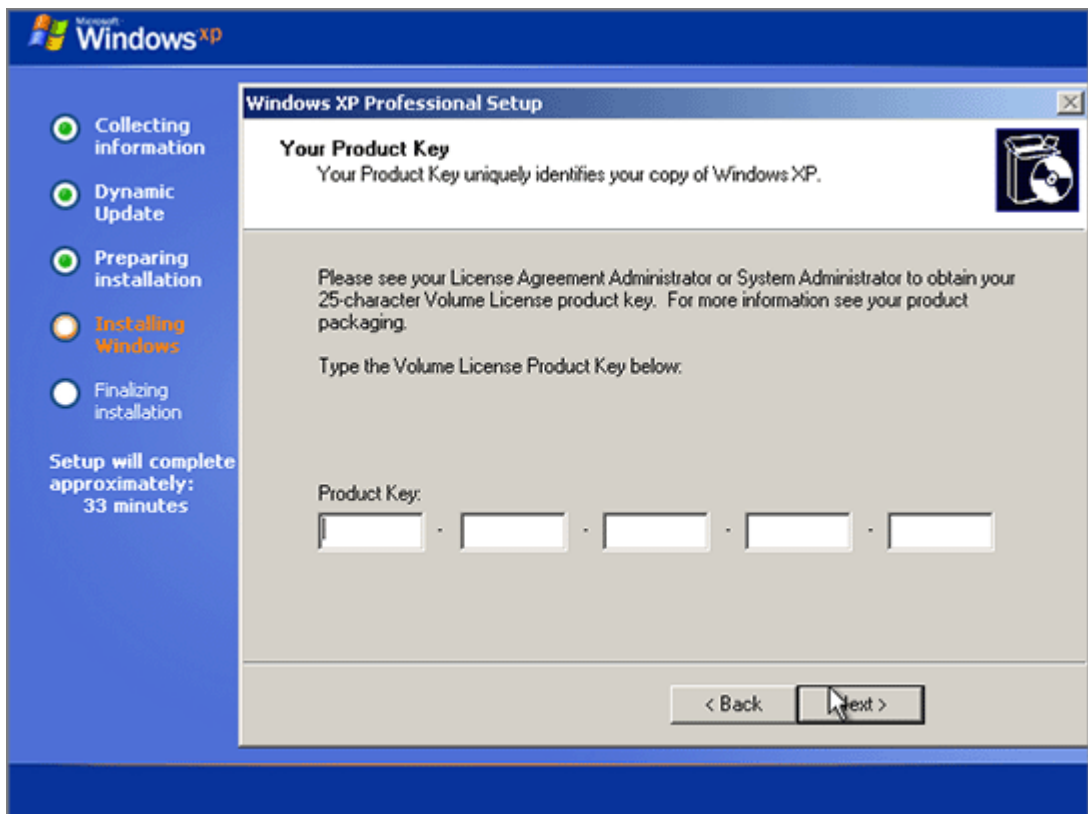
ENTER=Install C=Create Partition F3=Quit

```

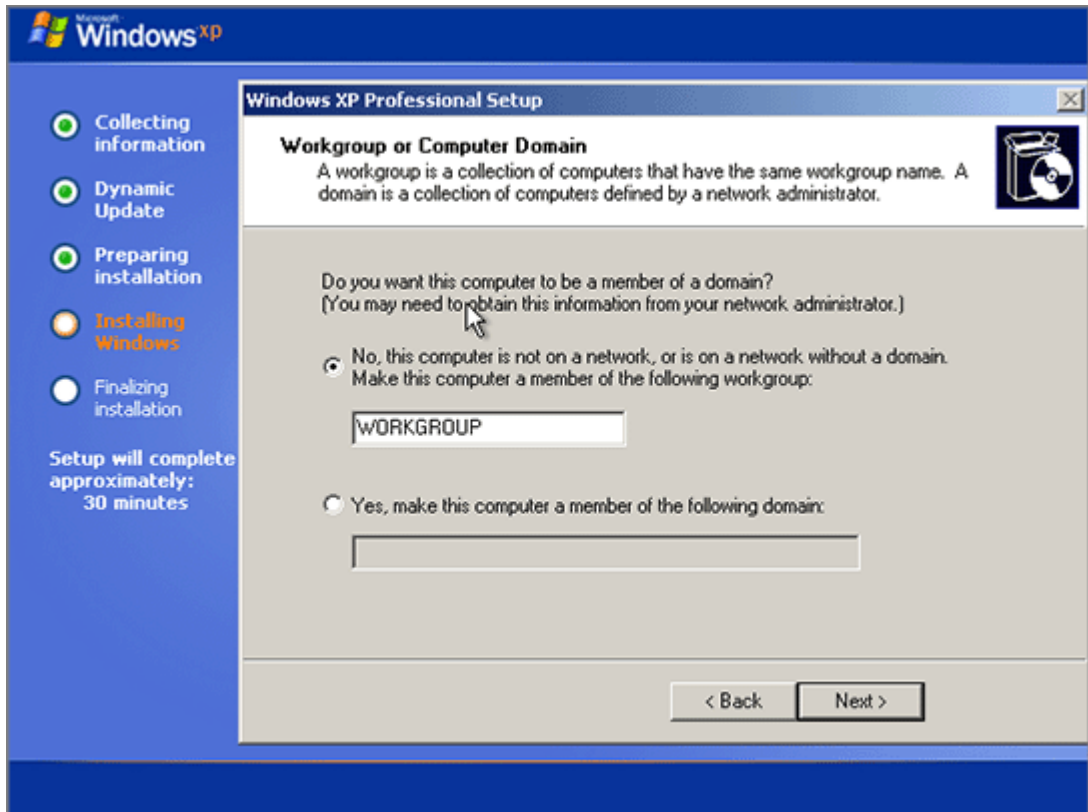
- After this, you'll have to choose how to format your system volume. It is best to format the Windows XP system disk using NTFS quick formatting method. So, select the type of file system and mode of formatting and press Enter.



- The virtual machine will restart automatically. The text stage of the installation is completed. During the next stage, dialog boxes will be used. Select your Regional and Language Options and proceed to entering license key. Type it and click Next.



- On the next several screens you will be asked to enter computer name and administrator password, select your date and time zone, specify your network setting (we recommend to select typical ones).
- Next, you have to specify whether your computer will be a member of a domain. If you are creating the virtual machine for running it in corporate environment, ask system administrator whether you should specify the domain. Otherwise, choose the first option to make your virtual machine a member of workgroup.

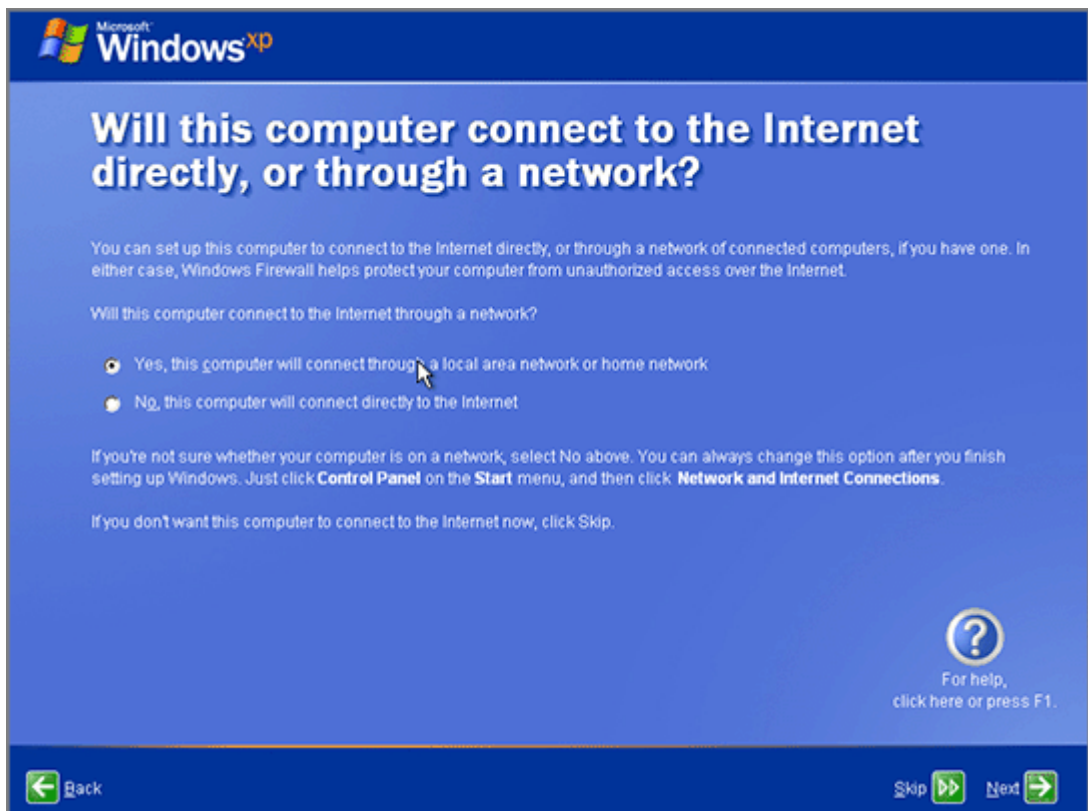


- After that, Setup adjusts the Display Settings for better image quality.

- In the Help protect my PC screen indicate whether you want to turn on the Automatic Updating feature. We recommend to turn automatic updates on.



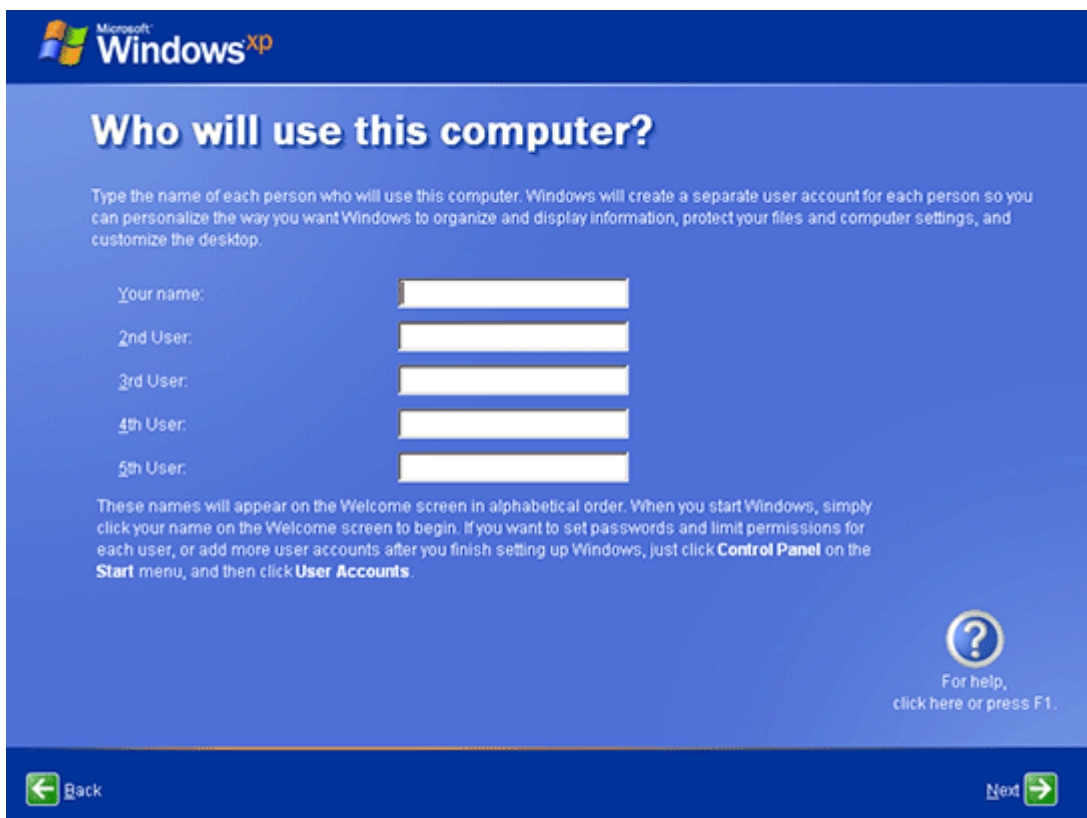
- As the next step, choose the way your computer will be connected to the Internet. Select Yes.



- If you want to register with Microsoft specify this in the following screen.



- Setup prompts you to create user accounts for each person who will use this virtual machine.



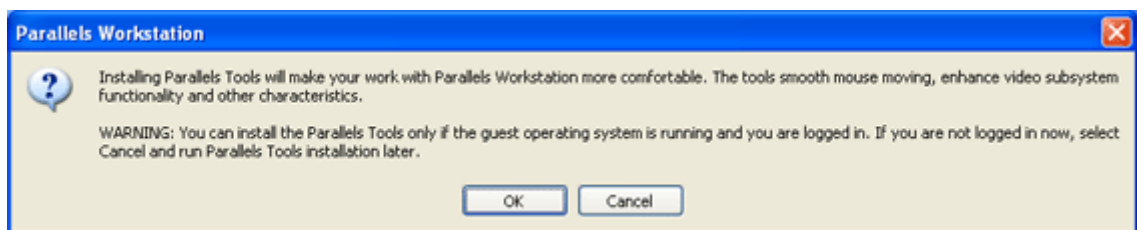
And this is all with the installation of Windows XP. But still there is one more important moment, installation of Parallels Tools.

CHAPTER 5

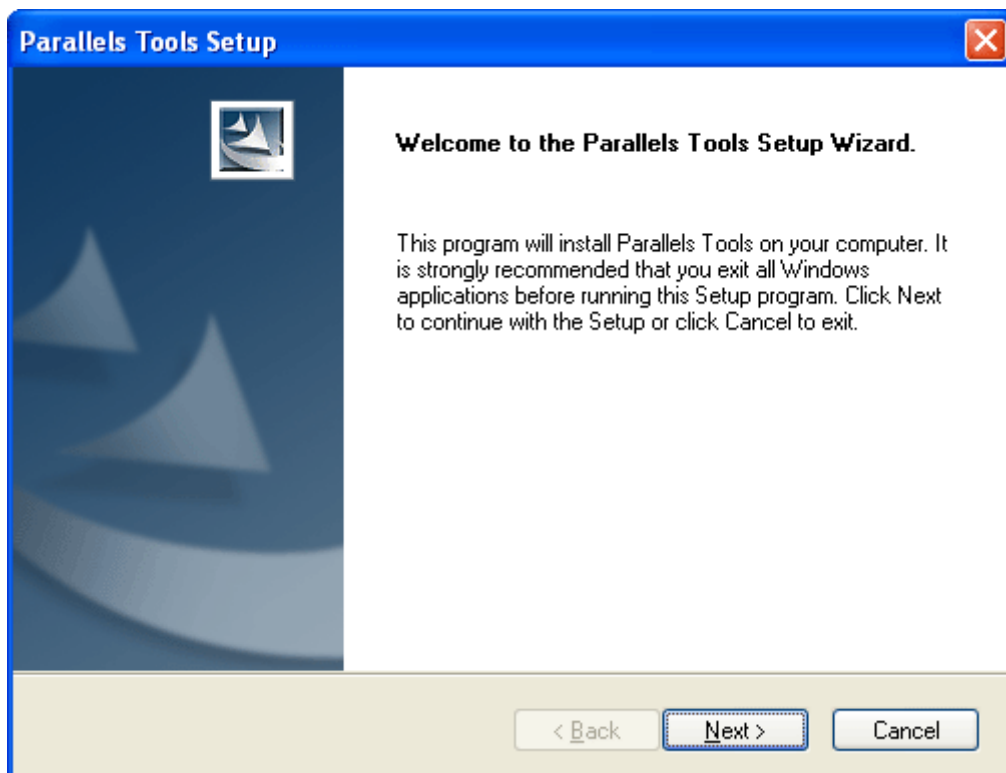
Installing Parallels Tools

In general, you can start working with virtual machine right after the installation of Windows XP. However, if you do this, you will meet some unpleasant moments. Do you remember that you have to press special key combination each time you want to switch to your primary Windows or Linux when working in the virtual machine? And also how do you like this small screen of the virtual machine? Things will go better if you install in your virtual machine special drivers, called **Parallels Tools**. So, before begin to populate your new virtual machine with applications, have patience and do this first:

- 1 Select **Install Parallels Tools** in the **Parallels Workstation VM** menu.
- 2 When you see this message, just click **OK**.

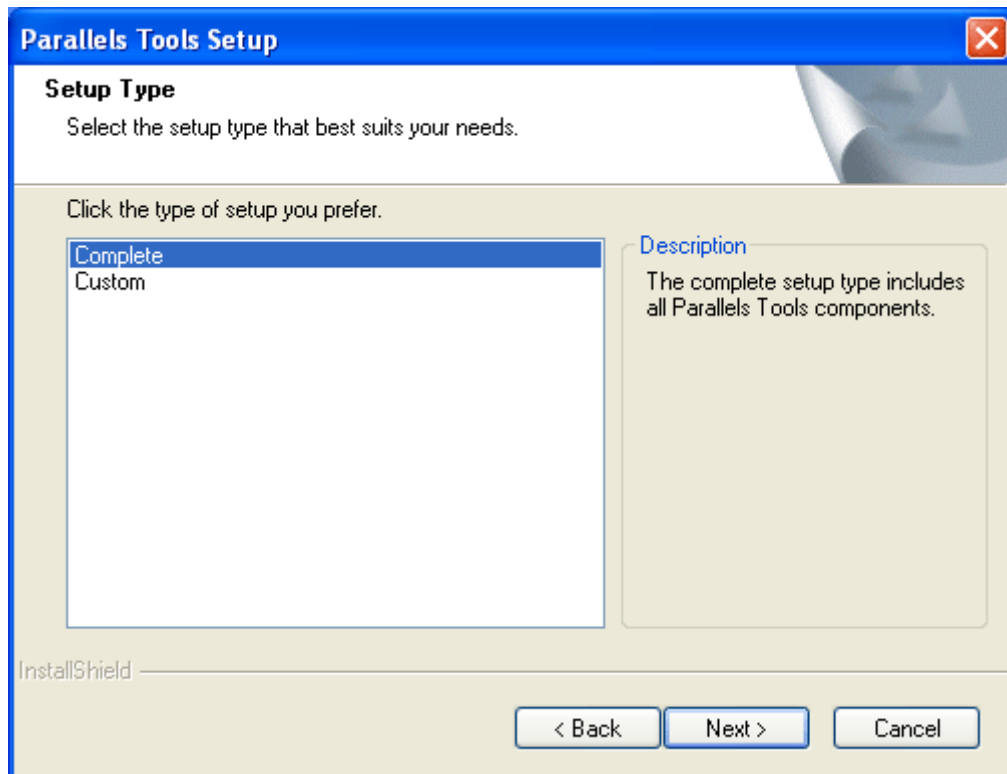


- 3 The **Parallels Tools Setup** wizard starts and greets you. Click **Next**.

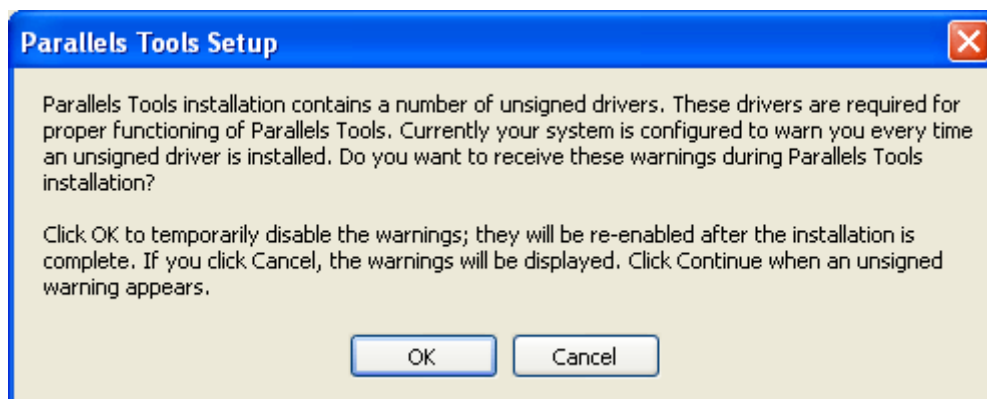


- 4 In the **Choose Destination Location** screen agree with the default directory, then click **Next**.

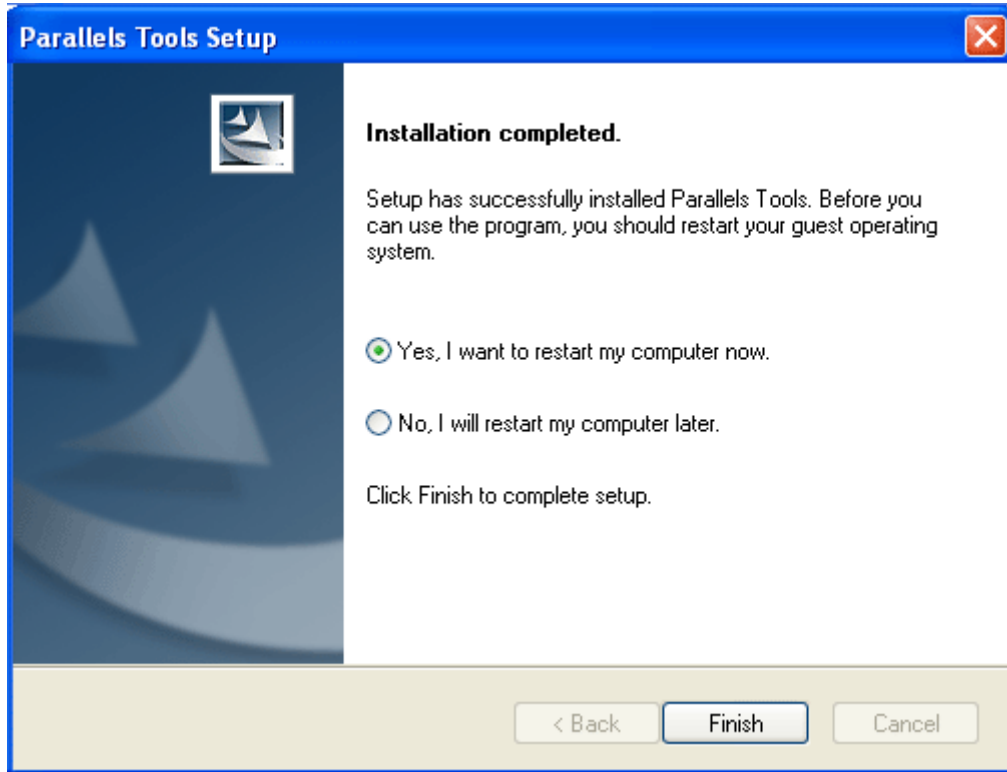
- 5 On the Setup Type screen leave the pre-selected *complete* setup. Click Next.



- 6 Agree with the default folder in the Select Program Folder screen, then the Check Setup Information screen displays the options selected. Click Next to begin the installation.
- 7 Click OK in the unsigned drivers warning.



- 8 After the wizard finishes to copy the tools, click **Finish** in the Installation Completed screen.



The virtual machine will be restarted and completely ready for work.

CHAPTER 6

What to Do Next

There are plenty of other good features in Parallels Workstation but we don't want to take your time anymore. Next things you will probably want to organize are: access to the Internet and communication between your virtual machine and your PC. The latter can be done via shared folders: folders in your primary OS that are also visible to a virtual machine. To set up these two things we recommend that you read:

- either **Parallels Workstation Getting Started Guide**, a small guide for newbies to virtualization (you can find it in the same folder where you installed Parallels Workstation. In Windows primary system the default folder is "C:\Program Files\Parallels\Parallels Workstation". In Linux primary OS the default folder is "/usr/lib/parallels/doc/help").

Accessing the Internet and Creating Shared Folder topics;

- or **Parallels Workstation 2.2 User Guide**, a complete guide on all Parallels Workstation functions (select **Help->Contents** in menu)

Managing Virtual Machines/Networking in a Virtual Machine and Managing Virtual Machines/Using Shared Folders sections.

Enjoy using your virtual machines!